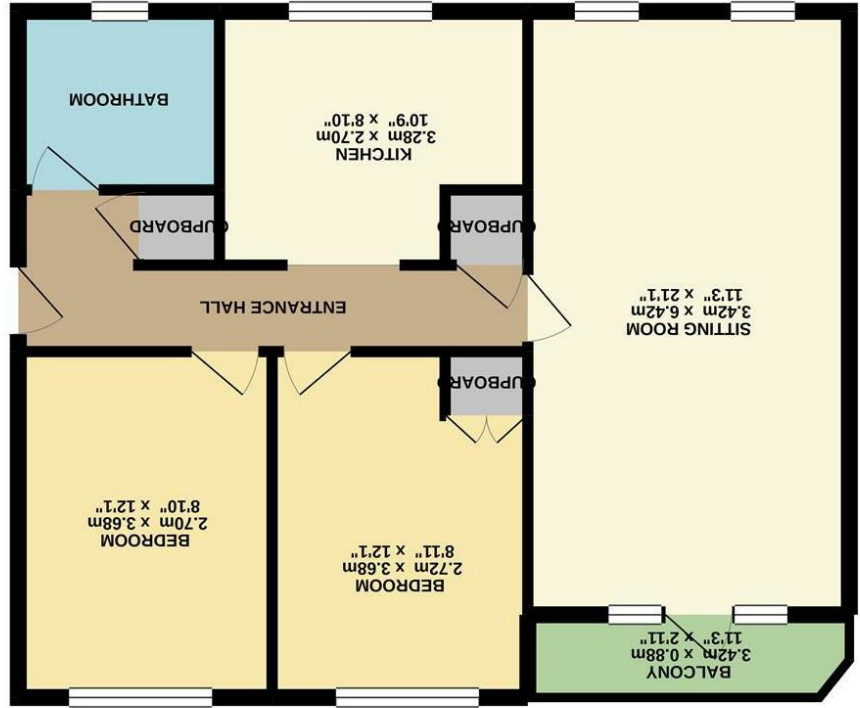


What every attempt has been made to ensure the accuracy of the floorplan contained here, measurements of doors, windows, rooms and appliances are to responsibility taken to any error of omission or mis-statement. This plan is for illustrative purposes only and should be used as such for any prospective purchaser. The services, systems and appliances have not been tested and no guarantee as to their operability or efficiency can be given.  
 Made with floorplan ©2021  
 TOTAL FLOOR AREA: 61.5 sq.m. (662 sq.ft.) approx.



GROUND FLOOR  
 61.5 sq.m. (662 sq.ft.) approx.

England & Wales	
EU Directive 2002/91/EC	
Not energy efficient - higher running costs	
(1-20)	G
(21-30)	F
(31-40)	E
(41-50)	D
(51-60)	C
(61-70)	B
(71-80)	A
Very energy efficient - lower running costs	
(92 plus)	A
Potential	Current

**Energy Efficiency Rating**

Disclaimer - In accordance with the Property Misdescriptions Act, the company gives notice that all descriptions, references to condition, necessary permissions for use and other details are given in good faith and believed to be correct, but any intending lessees do not rely on them as statements of fact, but must satisfy themselves by inspection or other means, as to their accuracy.



Milton Close | Norwich | NR1  
**Price guide £150,000**

**Norfolk Property  
online.**

Norfolk Property Online presents this stylish, purpose-built apartment. Ideally located a short walk from Norwich City Centre and within easy reach of a variety of local amenities, this home has been thoughtfully improved and well maintained by the current owners. With a generous lounge diner that opens onto a private balcony, this home also offers a spacious kitchen, re-fitted family bathroom and two generous double bedrooms. An ideal opportunity for any first-time buyer or investor, an internal viewing comes highly recommended.

